

# Research Facilitation and Capability Services

Metro South Health



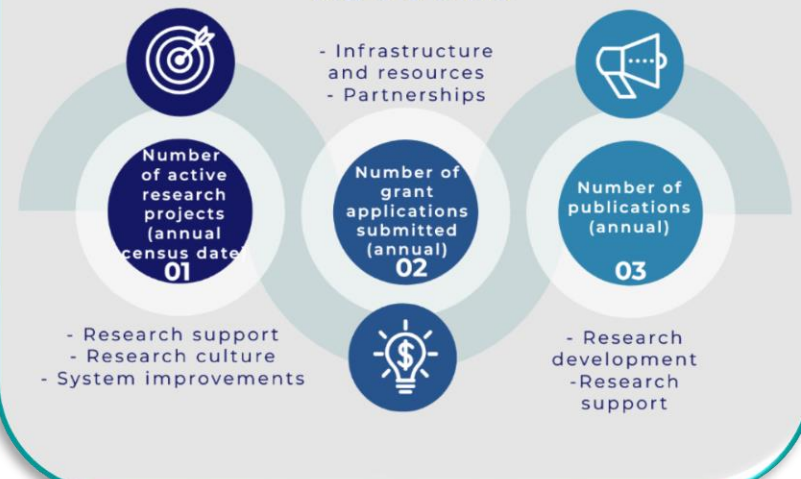
## Research facilitation and capability officers

Research facilitators and capability officers, also referred to as Research Navigators, are based within a Metro South Health (MSH) facility/service (e.g. Logan & Beaudesert Hospitals, QEII Hospital, Redlands & Wynnum Hospitals, Addiction and Mental Health Services and Community & Oral Health Services). Research facilitators have experience in either research administration or academic research and can support researchers throughout their research journey in MSH.

Research facilitators aim to:

- establish strong links with researchers at their facility/service and with the Metro South Research office
- facilitate and support research in professional streams within their facility/service
- provide research training and advice to researchers in relation to research excellence
- aid in coordinating HREC application and site-specific assessment authorisation processes

## Metrics and indicators of success



## Example activities

- Raising awareness of Metro South Research policies, procedures and processes
- Practical assistance with research grant applications
- Establishment of facility/service research advisory group
- Coordination of research showcase event/s
- Delivery and/or coordination of research training session

One-on-one mentoring or establishment of mentoring networks

