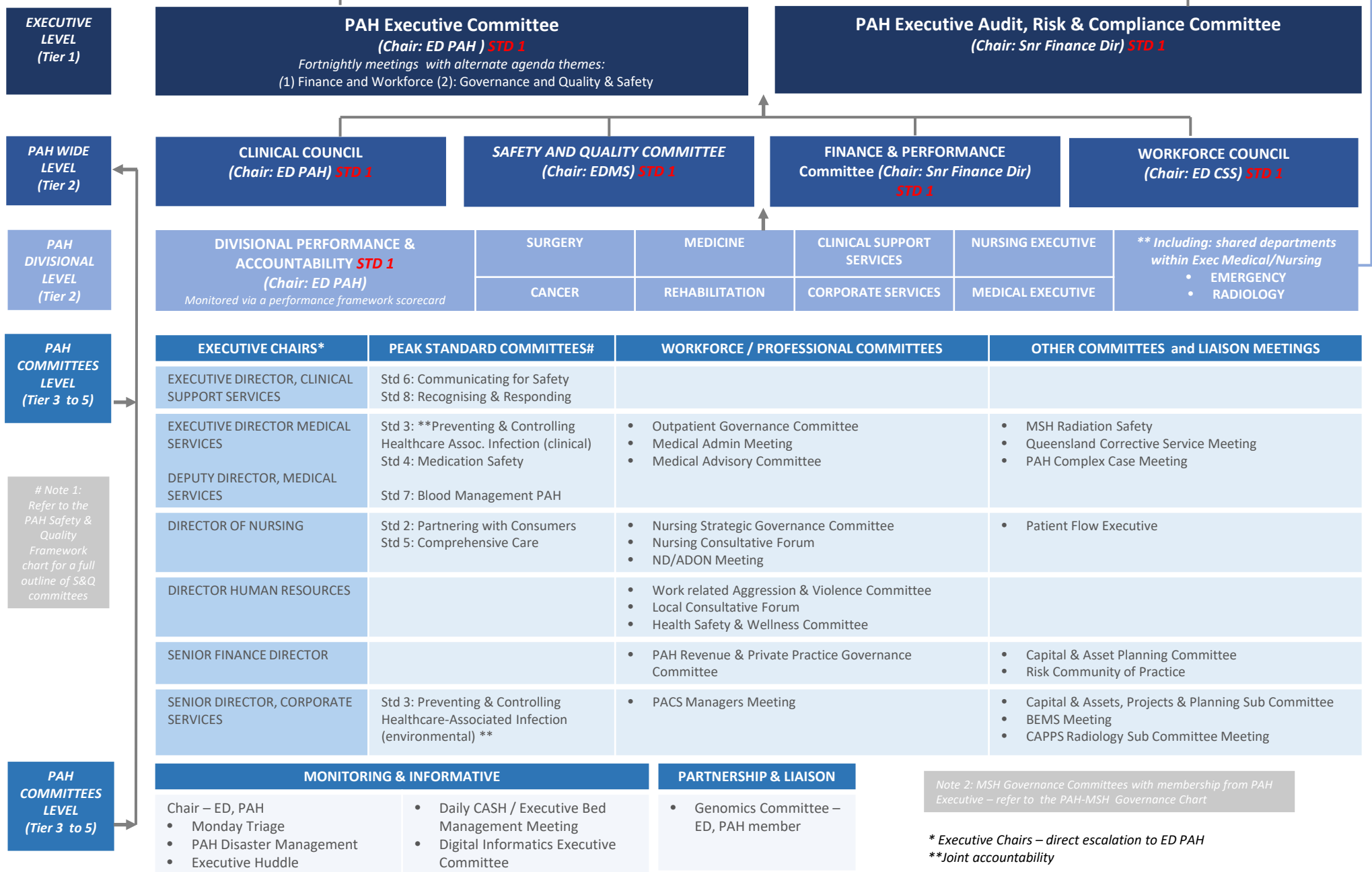


EXECUTIVE DIRECTOR, PAH



EXECUTIVE LEVEL (Tier 1)

PAH WIDE LEVEL (Tier 2)

PAH DIVISIONAL LEVEL (Tier 2)

PAH COMMITTEES LEVEL (Tier 3 to 5)

Note 1: Refer to the PAH Safety & Quality Framework chart for a full outline of S&Q committees

PAH COMMITTEES LEVEL (Tier 3 to 5)

PAH Executive Committee
 (Chair: ED PAH) **STD 1**
 Fortnightly meetings with alternate agenda themes:
 (1) Finance and Workforce (2): Governance and Quality & Safety

PAH Executive Audit, Risk & Compliance Committee
 (Chair: Snr Finance Dir) **STD 1**

CLINICAL COUNCIL
 (Chair: ED PAH) **STD 1**

SAFETY AND QUALITY COMMITTEE
 (Chair: EDMS) **STD 1**

FINANCE & PERFORMANCE Committee
 (Chair: Snr Finance Dir) **STD 1**

WORKFORCE COUNCIL
 (Chair: ED CSS) **STD 1**

DIVISIONAL PERFORMANCE & ACCOUNTABILITY **STD 1**
 (Chair: ED PAH)
 Monitored via a performance framework scorecard

SURGERY
CANCER

MEDICINE
REHABILITATION

CLINICAL SUPPORT SERVICES
CORPORATE SERVICES

NURSING EXECUTIVE
MEDICAL EXECUTIVE

**** Including: shared departments within Exec Medical/Nursing**

- EMERGENCY
- RADIOLOGY

EXECUTIVE CHAIRS*	PEAK STANDARD COMMITTEES#	WORKFORCE / PROFESSIONAL COMMITTEES	OTHER COMMITTEES and LIAISON MEETINGS
EXECUTIVE DIRECTOR, CLINICAL SUPPORT SERVICES	Std 6: Communicating for Safety Std 8: Recognising & Responding		
EXECUTIVE DIRECTOR MEDICAL SERVICES DEPUTY DIRECTOR, MEDICAL SERVICES	Std 3: **Preventing & Controlling Healthcare Assoc. Infection (clinical) Std 4: Medication Safety Std 7: Blood Management PAH	<ul style="list-style-type: none"> Outpatient Governance Committee Medical Admin Meeting Medical Advisory Committee 	<ul style="list-style-type: none"> MSH Radiation Safety Queensland Corrective Service Meeting PAH Complex Case Meeting
DIRECTOR OF NURSING	Std 2: Partnering with Consumers Std 5: Comprehensive Care	<ul style="list-style-type: none"> Nursing Strategic Governance Committee Nursing Consultative Forum ND/ADON Meeting 	<ul style="list-style-type: none"> Patient Flow Executive
DIRECTOR HUMAN RESOURCES		<ul style="list-style-type: none"> Work related Aggression & Violence Committee Local Consultative Forum Health Safety & Wellness Committee 	
SENIOR FINANCE DIRECTOR		<ul style="list-style-type: none"> PAH Revenue & Private Practice Governance Committee 	<ul style="list-style-type: none"> Capital & Asset Planning Committee Risk Community of Practice
SENIOR DIRECTOR, CORPORATE SERVICES	Std 3: Preventing & Controlling Healthcare-Associated Infection (environmental) **	<ul style="list-style-type: none"> PACS Managers Meeting 	<ul style="list-style-type: none"> Capital & Assets, Projects & Planning Sub Committee BEMS Meeting CAPPS Radiology Sub Committee Meeting

MONITORING & INFORMATIVE

Chair – ED, PAH

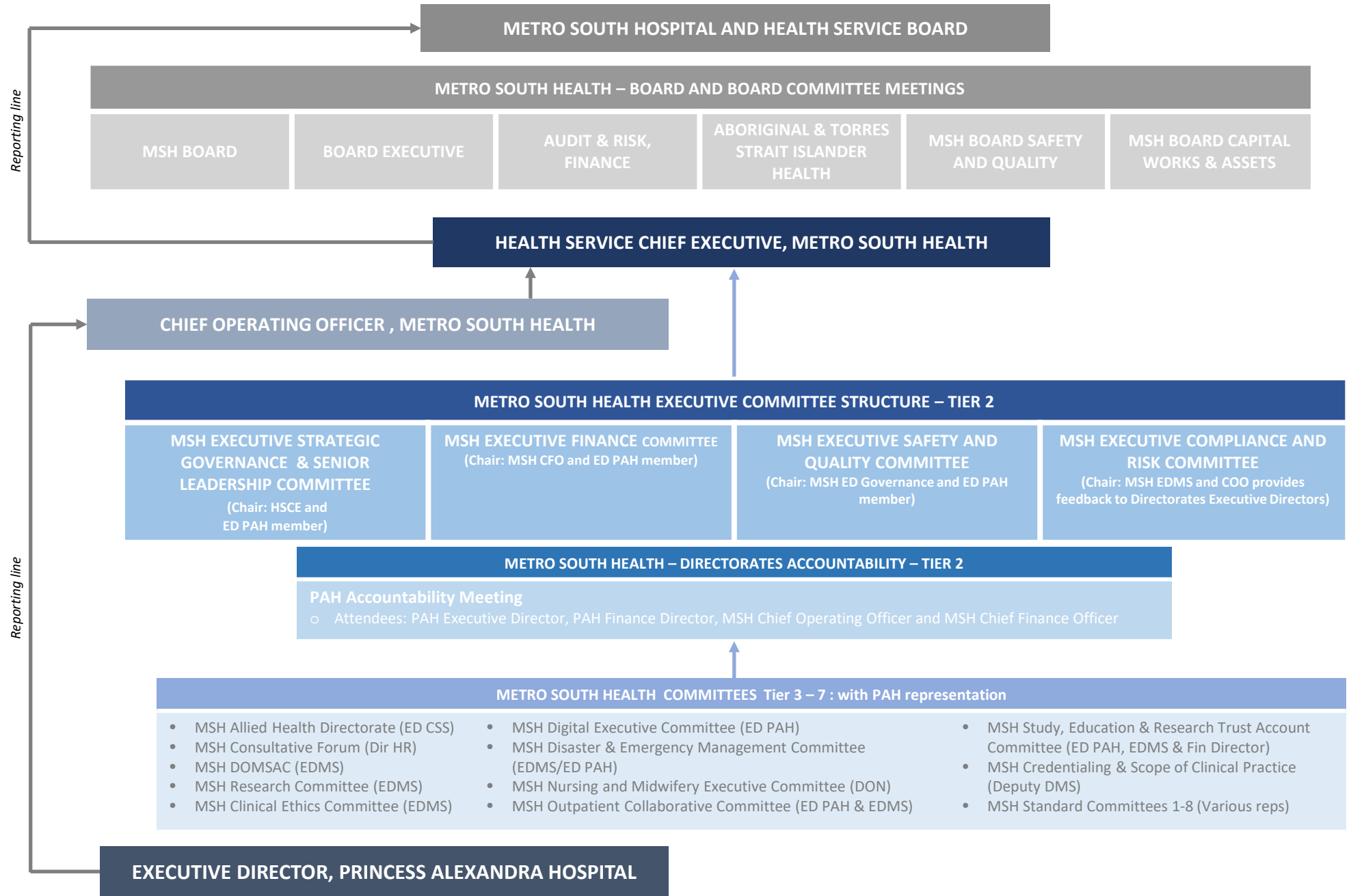
- Monday Triage
- PAH Disaster Management
- Executive Huddle
- Daily CASH / Executive Bed Management Meeting
- Digital Informatics Executive Committee

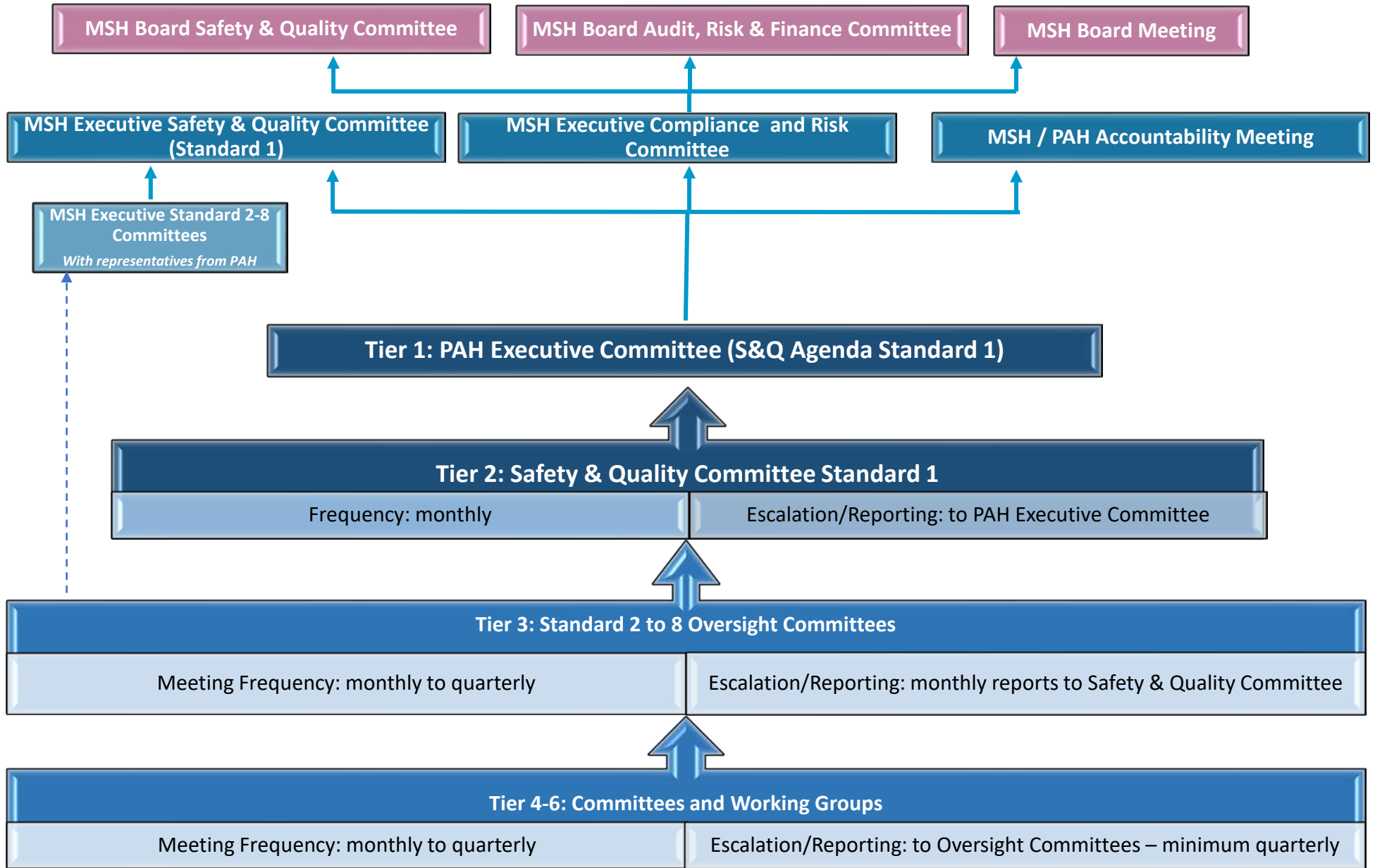
PARTNERSHIP & LIAISON

- Genomics Committee – ED, PAH member









Note 2: MSH Governance Committees with membership from PAH Executive – refer to the PAH-MSH Governance Chart

* Executive Chairs – direct escalation to ED PAH
 ** Joint accountability





SAFETY & QUALITY COMMITTEE

Standard	 Standard 1: Clinical Governance	 Standard 2: Partnering with Consumers	 Standard 3: Preventing and Controlling Healthcare-Associated Infection	 Standard 4: Medication Safety	 Standard 5: Comprehensive Care	 Standard 6: Communicating for Safety	 Standard 7: Blood Management	 Standard 8: Recognising and Responding to Acute Deterioration
Exec. Sponsor	Executive Director PAH	Director of Nursing Services	Executive Director Medical Services/Senior Director Corporate Services	Executive Director Medical Services	Executive Director Nursing Services	Executive Director Clinical Support Services	Executive Director Medical Services (DDMS)	Executive Director Clinical Support Services
Tier 2-3: Oversight Committee	PAH Safety and Quality Committee	Partnering with Consumers Advisory Committee	Preventing & Controlling Healthcare-Associated Infection Committee	Drugs & Therapeutics Committee	Comprehensive Care Committee	Communicating for Safety Committee	MSH Blood Management Committee	Recognising and Responding to Acute Deterioration
Tier 4-5: Committees & Working Groups	<ul style="list-style-type: none"> ▪ Procedural Reference Governance Group ▪ Critical Incident & Mortality Review ▪ PAH Disaster & Emergency Advisory Committee ▪ PAH Work Health & Safety Committee ▪ MS Radiation Safety Reference ▪ PAH Risk Community of Practice – reports to PAH Exec Audit, Risk, Compliance ▪ PAH Aboriginal & Torres Strait Islander Advocates & Stakeholder ▪ BEMS (environment) 			<ul style="list-style-type: none"> ▪ Medication Safety Team Meeting 	<ul style="list-style-type: none"> ▪ Falls Prevention Advisory Committee ▪ Nutrition Care Committee ▪ Advisory Group for Quality End of Life Care ▪ Bariatric Advisory ▪ Cognitive Impairment ▪ Pressure Injuries Prevention Advisory Committee ▪ Unpredictable Behaviors and Restrictive Practices (quarterly) 	<ul style="list-style-type: none"> ▪ Patient Identification & Procedure Matching ▪ Clinical Handover 	<ul style="list-style-type: none"> ▪ PAH Blood Management Committee (quarterly) 	<ul style="list-style-type: none"> • Resuscitation Committee
Tier 5-6 Committees & Working Groups	<ul style="list-style-type: none"> ▪ Complex Case Committee ▪ Hospital Acquired Complications ▪ Managing Deceased Patients ▪ Patient Safety Activity Register Review 	<ul style="list-style-type: none"> ▪ PAH Brochures and Posters Working Group (Health Literacy) 	<ul style="list-style-type: none"> ▪ Antimicrobial Stewardship (quarterly) 	<ul style="list-style-type: none"> ▪ MSH VTE Working Group 		<ul style="list-style-type: none"> ▪ Nursing Clinical Handover 		