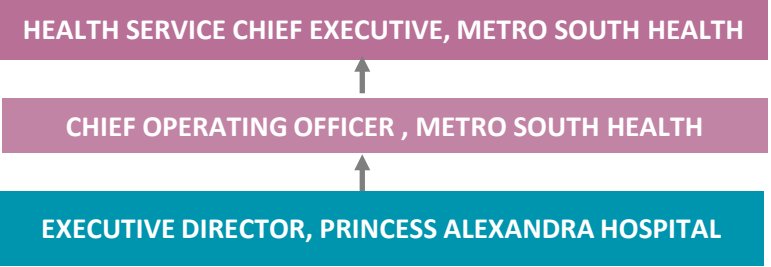


*Note: MSH service functions are currently under re-alignment in a business case for change, this process has commenced and will have impact for PAH. Potential areas of impact are noted with **



- MSH – WIDE SERVICES AND PARTNERSHIPS**
- Metro South Addiction & Mental Health Services
 - Metro South Governance (incl Legal Services)
 - Media & Communications
 - Clinical Informatics (including HMS)
 - Metro South Clinical Streams
 - Metro South Wide Infrastructure & Asset Service
 - Metro South Health Centre for Health Research

PAH EXECUTIVE

DIRECTOR of NURSING PAH*	EXECUTIVE DIRECTOR MEDICAL SERVICES	EXECUTIVE DIRECTOR CLINICAL SUPPORT SERVICES	SENIOR DIRECTOR CORPORATE SERVICES*	FINANCE DIRECTOR *	HR DIRECTOR *
Nursing Practice Development Unit * ▪ <i>Research, Ethics, Education</i> Nursing Resource Management, Productivity & Performance* ▪ <i>Staff Allocations, After Hours Nurse Managers, Nursing Workforce, Permanent Nurse Pool</i> PAH Patient Flow and Ambulatory Program <i>*Former PAH EDNS / MSH EDNMS Directorate commenced transitioned to new structure from March 2021, further changes pending</i>	Support Services ▪ Medical Education Unit ▪ Medical Administration Clinical Governance ▪ Patient Safety & Quality Unit ▪ Complaints & Compliments Management Clinical Services ▪ Pharmacy # ▪ Emergency ## ▪ Radiology ## ▪ Donate Life and Qld Tissue Banks <i># Transitioning to Clinical Support Services in May/June 2021</i> <i>## Shared governance with EDNS & EDMS</i>	Aboriginal and Torres Strait Islander Liaison Audiology Nutrition and Dietetics Occupational Therapy (<i>including Recreation and Leisure</i>) Pastoral Care Physiotherapy Prosthetics Orthotics and Podiatry Psychology Social Work Speech Pathology Volunteer Services Workforce Development Centre for Functioning and Health Research	Administration Services Central Clinical Resource Unit Fleet Services Operational Services PACS Equipment and Infrastructure <i>* Directorate will be impacted by the MSH business case for change - effective date TBC</i>	Financial Management Revenue Private Practice <i>* Directorate will be impacted by the MSH business case for change - effective date TBC</i>	Recruitment Work Health & Safety Development Functions Employment Relations <i>* Directorate will be impacted by the MSH business case for change- effective date TBC</i>

PAH CLINICAL DIVISIONS

SURGERY		MEDICINE		CANCER	REHABILITATION
Acute Pain Service	Ophthalmology	Alcohol & Drug Assessment	Internal Medicine	Gamma Knife® Centre of Qld	Amputee Rehabilitation Clinic
Acute Surgery Unit	Orthopaedics	Cardiology	Medical Asst. & Planning Unit	Haematology	Brain Injury Rehabilitation Service:
Anaesthetics	Plastic & Reconstructive	Chronic Disease	Metro South Clinical Tuberculosis	Medical Oncology	• <i>BIRU Ward & Day;</i>
Breast & Endocrine	Stomal Therapy	Clinical Immunology	Metro South Public Health Unit*	Radiation Oncology (Mater Centre)	• <i>Jasmine Unit;</i>
Cardiothoracic Surgery	Surgical Care Unit	Clinical Pharmacology	Neurology	Radiation Oncology (PAH Centre)	• <i>ABIOS;</i>
CSSD	Transplant Services	Complex Obesity Management	Palliative Care (Metro South)	Metro South BreastScreen	• <i>STEPS;</i>
Colorectal	Trauma Service	Dermatology	Renal Medicine / Nephrology	Paediatric Radiation	• <i>ABI TRS</i>
ENT, Head, Neck/Skull	Upper GI	Diabetes & Endocrinology	Respiratory/Sleep Medicine	Queensland Cancer Control & Analysis Team	Qld Spinal Cord Injury Service:
HPB	Urology	Gastroenterology & Hepatology	Rheumatology		• <i>SIU Ward;</i>
ICU	Vascular Surgery	Geriatric & Rehabilitation Unit	Security Unit		• <i>Transitional Rehabilitation Program (TRP);</i>
Neurosurgery	Day Surgery & Treatment Unit	Hypertension	Vascular Medicine		• <i>Spinal Outreach Team (SPOT)</i>
		Infection Management			MS Persistent Pain Service