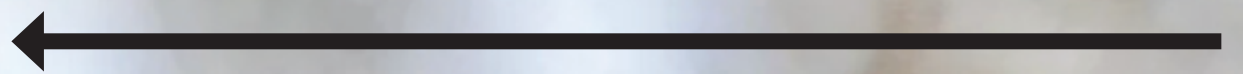


# Be Bat Aware

## Can't touch this



- ☹ Australian bat lyssavirus is similar to the rabies virus which can be fatal to humans.
- ☹ All Australian bats have the potential to carry lyssavirus.



**If you find a sick or injured bat**

DO NOT touch  
**Call 1300ANIMAL**

**If your pet has been exposed to a bat**

Seek urgent veterinarian advice.



**If you are bitten or scratched**

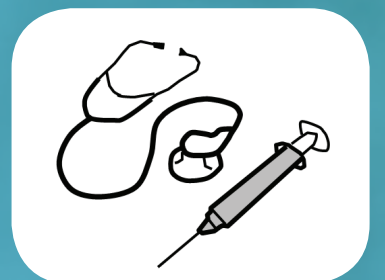
Wash wound with soap and water, apply antiseptic.



**If bat saliva comes in contact with your face**

Thoroughly rinse with water.

**Contact your GP, hospital, 13HEALTH or your local Public Health Unit**



Visit [disease-control.health.qld.gov.au](http://disease-control.health.qld.gov.au) for more information.

*We care about you*



**Queensland  
Government**