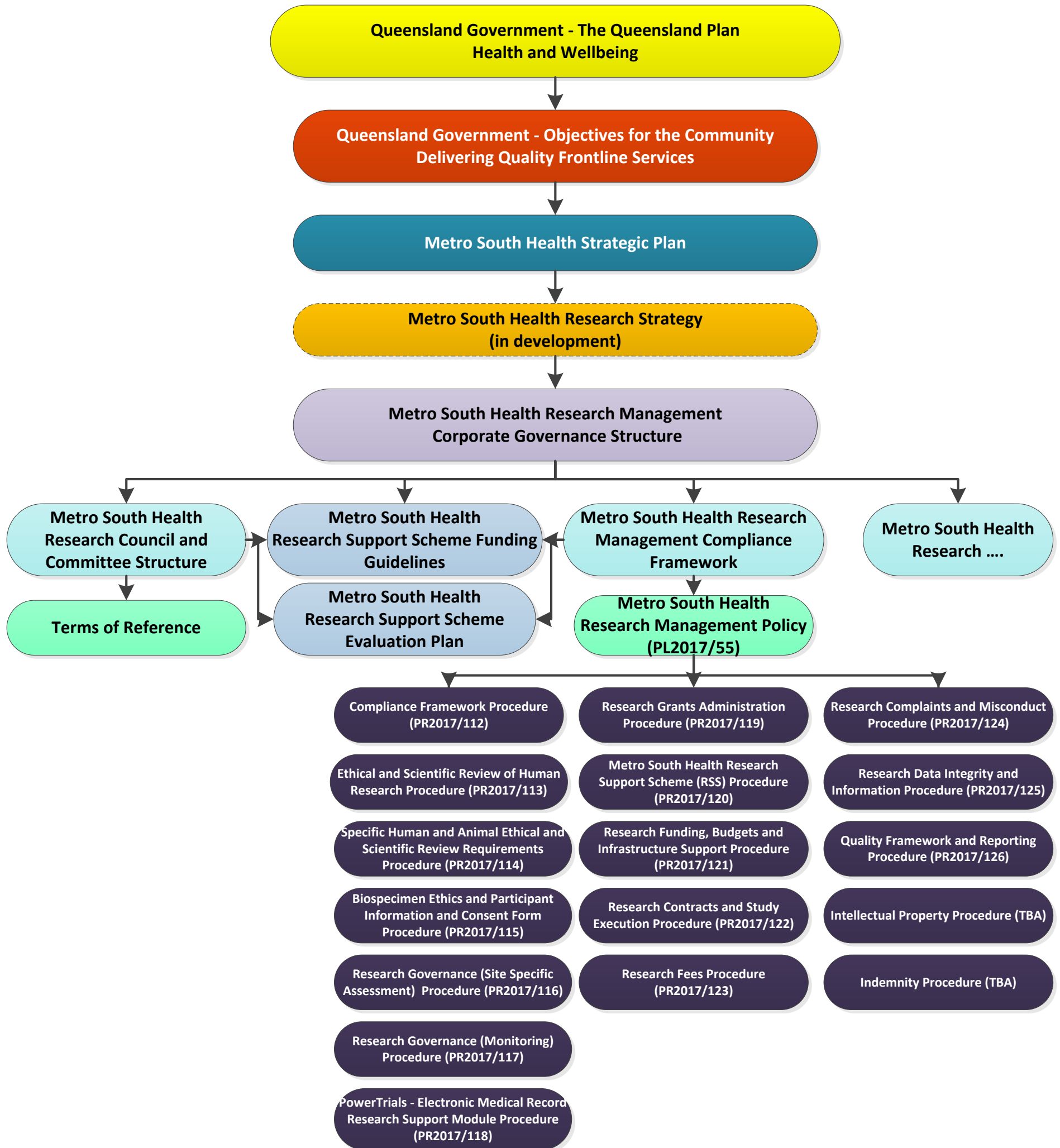


Metro South Health Research Strategic Alignment



Metro South Health Research Management Compliance Framework Procedure Content

Metro South Health Research Management Policy [\(PL2017/55\)](#)

Research Management Procedures

<i>Compliance/Governance</i>	<i>Funding/Grants/Contracts</i>	<i>Integrity/Quality</i>
<p>1.1 Compliance Framework Procedure (PR2017/112)</p> <ul style="list-style-type: none"> International, National and State Regulation, Accountability and Best Practice Principles - Legislated Requirements, Other Mandatory Requirements and Guidelines and Standards Metro South Health Research Management Compliance Framework Risk Management <p>1.2 Ethical and Scientific Review of Human Research Procedure (PR2017/113)</p> <ul style="list-style-type: none"> Types of Ethical and Scientific Review Single Ethical and Scientific Review of Multi-centre Research Human Research Ethics Committee Review Metro South Health Human Research Ethics Committee (HREC) Supporting Documentation Requirements <p>1.3 Specific Human and Animal Ethical and Scientific Review Requirements Procedure (PR2017/114)</p> <ul style="list-style-type: none"> Specific Human Ethical and Scientific Review Requirements Animal Research Guidelines <p>1.4 Biospecimen Ethics and Participant Information and Consent Form Procedure (PR2017/115)</p> <ul style="list-style-type: none"> Legal and Ethical Issues Informed Consent <p>1.5 Research Governance (Site Specific Assessment) Procedure (PR2017/116)</p> <ul style="list-style-type: none"> Research Governance Site Specific Assessment Pre-Authorisation Site Specific Assessment Post Authorisation Ongoing Maintenance of Approved Research <p>1.6 Research Governance (Monitoring) Procedure (PR2017/117)</p> <ul style="list-style-type: none"> Research Governance On-site Monitoring <p>1.7 PowerTrials - Electronic Medical Record Research Support Module Procedure (PR2017/118)</p> <ul style="list-style-type: none"> PowerTrials Research Support Module PowerTrials Monitoring 	<p>2.1 Research Grants Administration Procedure (PR2017/119)</p> <ul style="list-style-type: none"> Metro South Health Grants Administration Services Research Grant Applications Metro South Health Review and Certification Financial Management of Research Funds Reporting <p>2.2 Metro South Health Research Support Scheme (RSS) Procedure (PR2017/120)</p> <ul style="list-style-type: none"> Metro South Health Research Support Scheme Funds Research Grant Categories Metro South Health Research Support Scheme Evaluation Plan Metro South Health Research Support Scheme Awards Event <p>2.3 Research Funding, Budgets and Infrastructure Support Procedure (PR2017/121)</p> <ul style="list-style-type: none"> Funding Requirements Research Budgeting Funding Sources - Specific Requirements <p>2.4 Research Contracts and Study Execution Procedure (PR2017/122)</p> <ul style="list-style-type: none"> Research Contract Management Fundamental Principles and Clauses for all Research Contracts Schedules <p>2.5 Research Fees Procedure (PR2017/123)</p> <ul style="list-style-type: none"> Research Application Fees Research Fee Structure Amendments 	<p>3.1 Research Complaints and Misconduct Procedure (PR2017/124)</p> <ul style="list-style-type: none"> Establishing a Responsible Research Environment Complaints Process Research Misconduct Conflicts of Interest Other Matters <p>3.2 Research Data Integrity and Information Procedure (PR2017/125)</p> <ul style="list-style-type: none"> Access and Use of Confidential Information for the Purpose of Research Electronic Medical Records (EMR) Integrity <p>3.3 Quality Framework and Reporting Procedure (PR2017/126)</p> <ul style="list-style-type: none"> Quality Assurance and Improvement Health, Safety and Environment Protection <p>3.4 Intellectual Property (TBA)</p> <p>3.5 Indemnity (TBA)</p>