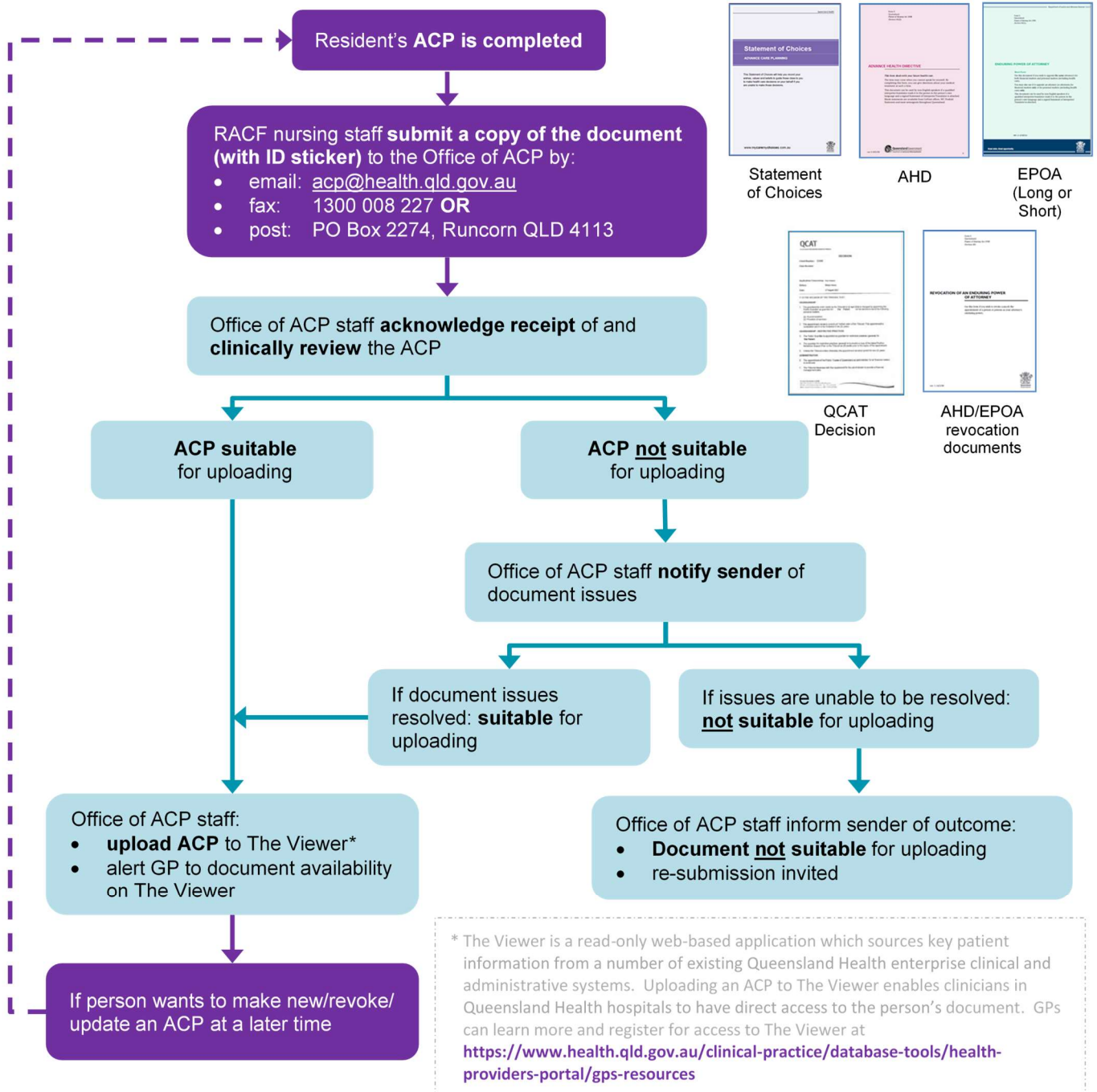


Steps for completed advance care planning documents to be uploaded to The Viewer

The flow chart below shows how residential aged care facilities can ensure their residents' documented advance care plans can be uploaded to The Viewer* and made accessible across health sectors.

If you have any queries about this process or would like help with advance care planning, Statement of Choices or resource support for health professionals and consumers, please call the Office of Advance Care Planning (ACP) on **1300 007 227 (1300 007 ACP)**.



Contact information

If you have additional questions about this process, please contact the **Office of Advance Care Planning:**

Phone: 1300 007 227 • Fax: 1300 008 227 • Email: acp@health.qld.gov.au • www.mycaremychoices.com.au