

ABI TRS Support for rural and regional clients

Accommodation is available for regional and rural clients

If you live outside the greater Brisbane catchment area, temporary, fully furnished accommodation can be provided for the length of your rehabilitation program. At the end of the program, you will return to your own home and local community.

The accommodation is independent living, and someone (for example, family member) is required to stay with you to provide support and remain actively engaged in the rehabilitation process for 10 weeks. Any formal, paid support services will need to be organised before leaving hospital.

ABI TRS does not provide funding, nor take responsibility for the provision of any disability support required by you or your family in the community.

Making a decision about staying in ABI TRS accommodation

The decision to return home or continue to have more rehabilitation in Brisbane can be difficult and is different for everyone. Some factors that you and your family may need to consider are:

- Do you have a property or animals at home that need looking after?
- Financial constraints.
- Work constraints.
- Schooling for children.
- The availability, amount and experience of rehabilitation providers in your area.
- Specialist follow up appointments required after leaving hospital.



Vocational
Rehabilitation



Health and
Wellbeing



Family and
Community



Research



Technology in
Rehabilitation



Clients and families report many benefits of staying in ABI TRS accommodation:

“Accessibility to therapies which would be out of reach from our rural home location therapy providing the best potential for a positive outcome”

Client and Spouse

“Just the fact we had somewhere to stay and continue therapy outside of the hospital. That was just huge for me.”

Client

This feedback does not represent the experience of every client.

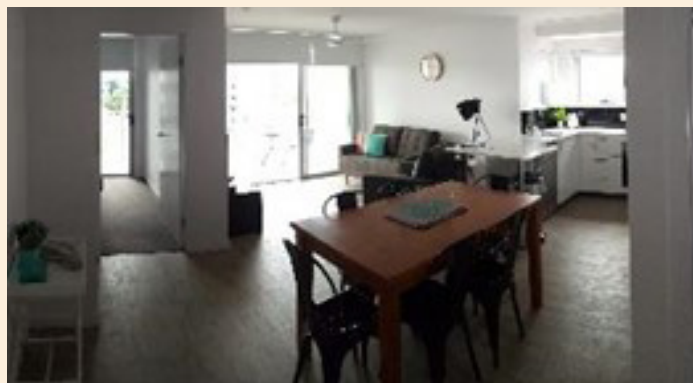
What sort of accommodation is offered?

ABI TRS has three accommodation options (1 unit and 2 houses) in suburbs close to PA Hospital. Each has one client (with family) in it at any one time. The houses and unit are fully furnished (including linen, crockery, cutlery, kitchen appliances, TV and internet). They are all close to public transport and local shops and have a dedicated car park space. They are like an Airbnb or holiday home and are also small pet friendly.

What does our unit look like?

ABI TRS has 1 unit which is close to the PA Hospital. It is spacious and fully furnished but may not be a good space for younger children. See some pictures from our unit below. The features of this unit are:

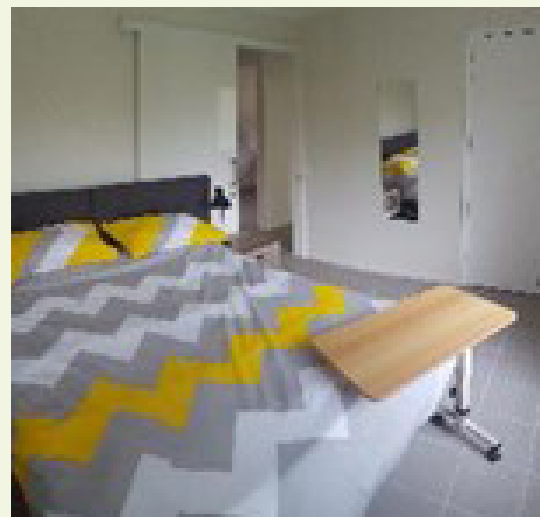
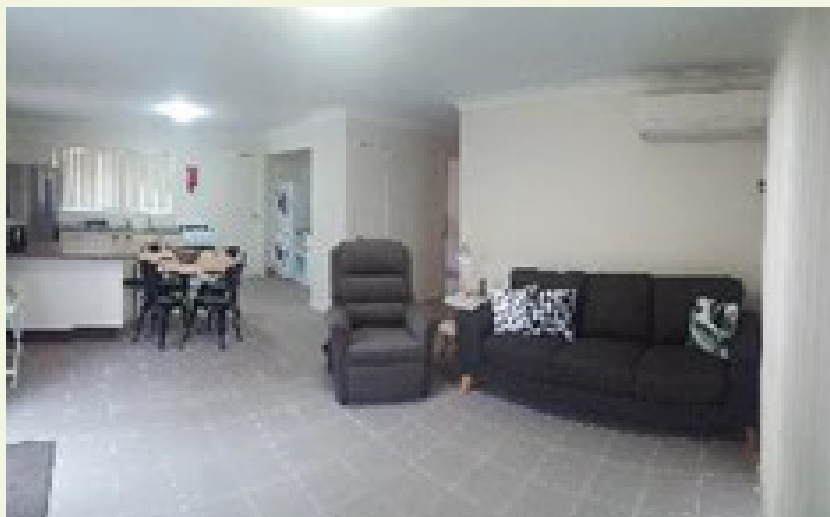
- Close to PA Hospital
- Close to public transport and shops
- Access to secure parking
- Self-contained and well equipped



House in Annerley (wheelchair accessible)

1 fully wheelchair accessible house is located in Annerley. The features of this house are:

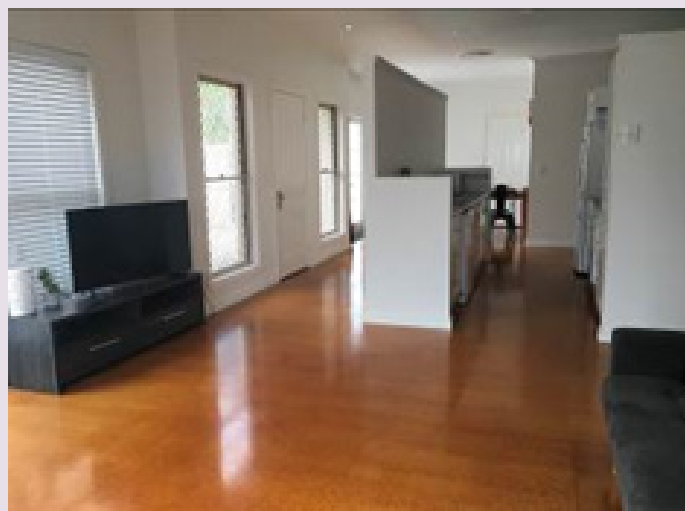
- Well furnished
- Close to shops, chemist and cafes
- A small yard with a fence.
- Some traffic noise



House in Sunnybank (partially modified)

A partially modified home is available in Sunnybank. Features are:

- Relatively quiet location
- Low maintenance
- Airconditioned
- Larger space than the unit, with larger rooms
- Small fenced yard
- Close to public transport, shopping centre and facilities
- Walking distance to shops
- High fence gives privacy and security
- Feels more like a home away from home.
- Low clothes line



Do I have to pay for accommodation?

You do not have to pay to access the accommodation (rent), or pay for electricity, internet, water or gas. You and your family member are responsible for all other costs and activities while you stay in the accommodation, including cooking meals, cleaning and maintaining the house.

You will also need to purchase any medication you are taking.

Contacts and where to find ABI TRS:

Burke Street Centre,

Ground Floor, B2 Burke Street Centre,

2 Burke St,

Woolloongabba QLD 4102

Phone: (07) 3176 1159

Email: abi-trs@health.qld.gov.au

Website: www.metrosoth.health.qld.gov.au/brain-injury-rehabilitation

