

Elective Surgery Access Team (ESAT)

QEII Hospital

Graduate Nursing Program

Hospital Overview

- QEII is a medium-sized hospital with 205 beds with an additional 44 beds offsite and more than 1700 staff.
- Currently QEII is undergoing an expansion project to add another 112-bed specialised surgical facility by 2027 to assist with future growth and become the premier surgical hospital for Metro South Health.
- QEII provides a range of inpatient and outpatient services including general medicine, general surgical, cardiology, geriatric medicine, intensive care, acute stroke, palliative care, and has a state-of-the-art Emergency Department and Endoscopy Suite.
- Accredited Pathway to Excellence® hospital providing a positive practice environment where nurses can flourish.

Our Staff

QEII employs over 1700 staff including:

- 972 nurses
- 355 medical officers
- 133 allied health professionals



Our Activity

In the 2022 – 2023 financial year there were:

- Over 35 000 patients admitted to QEII
- Over 65 000 patients treated in the Emergency Department
- 6 700 patient procedures conducted in the Endoscopy Suite

Aim of the Graduate Program

- Assist the graduate nurse to transition from novice to competent practitioner.
- Provide structured learning experiences that will assist the graduate registered nurse to develop their required clinical knowledge and skills.
- Support the graduate in both education and clinical environments.
- Promote the development of confidence in clinical practice.
- Provide adequate organisational support and practice-based education to assist the graduates successful transition into the workplace and to remain satisfied in the profession long term.

Find out more

metrosouth.health.qld.gov.au

MS_NM_Graduate_Support@health.qld.gov.au

(07) 3182 6330

QEII Jubilee Hospital



Elective Surgery Access Team (ESAT)

Unit information

ESAT provides a high standard of patient focused care through assessment, planning, early intervention, and evaluation of surgical needs to support patients achieving optimal health outcomes.

ESAT aims to provide an efficient and safe, patient focused pathway to surgery that accommodates the patient medical, personal, and social needs. Utilising a coordinated multidisciplinary approach, and evidence-based practice, to facilitate optimal patient outcomes and meet National Elective Surgery targets (NEST).

Elective Surgery Access Team (ESAT) provides:

- A multidisciplinary approach to preoperative optimisation and planning for patients waiting for elective surgery
- Theatre scheduling and surgical planning to facilitate efficient theatre utilisation
- Management of the Elective Surgery waitlist at QEII to meet National Elective Surgery target

We work within a large Interdisciplinary team including Medical Officers, Allied Health, and Executive Nursing team to achieve our best patient outcomes.

Our Activity

ESAT provides an out-patient preadmission service to optimise and prepare patients waiting for General, Gynaecology, Orthopaedic, and Urology elective surgery. A multidisciplinary approach is utilised to undertake pre-operative assessments, optimise patients for surgery and provide education and support to patients and their families. Appointments are either face-to-face, over the phone or via telehealth.

The scope of service provision includes:

- Pre-Procedure Preparation (PPP) clinic appointments
- Pre-Anaesthetic clinic appointments
- Patient assessments/observations
- Patient education/discharge planning
- Management of complex patients with multiple co-morbidities
- Pre-operative investigations
- Skins checks, urine checks
- Infectious diseases screening

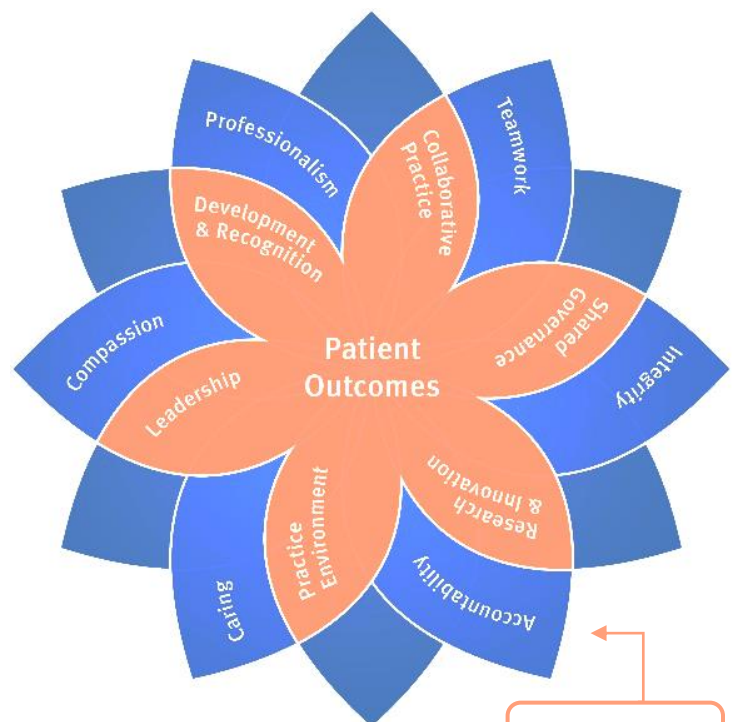
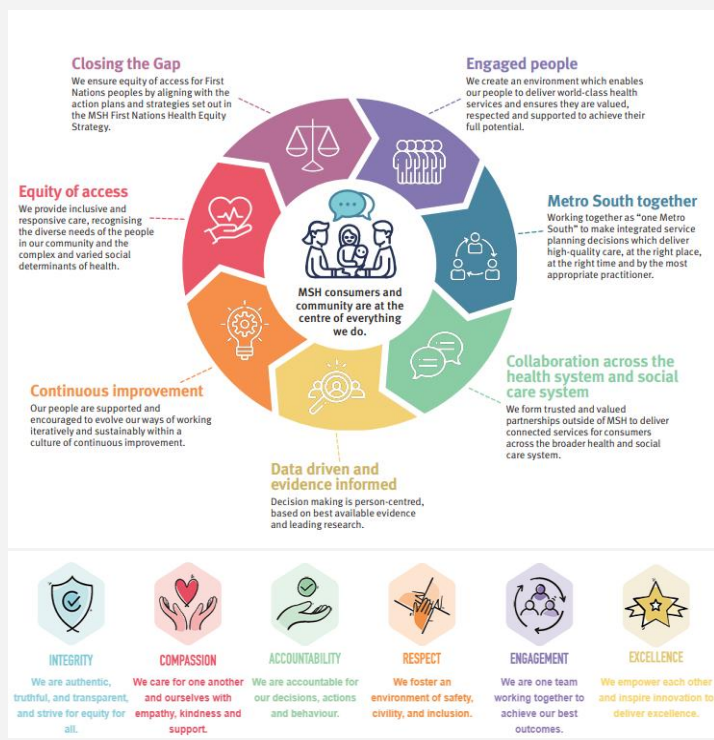
Graduate opportunities

- Learn and consolidate specialist surgical skills
- Management of complex patients' needs prior to admission
- Learn to work autonomously and make decisions
- Online and face-to-face learning
- Opportunity to undertake quality initiatives

Rotation graduate program

- 6-month rotation in ESAT
- 6-month rotation in Ward 2B General Surgical

Metro South Hospital Initiatives



QEII Professional Practice Model

metrosouth.health.qld.gov.au/join-our-team/graduate-programs