

Ward 4A: General Medical QEII Hospital Graduate Nursing Program

Hospital Overview

- QEII is a medium-sized hospital with 205 beds with an additional 44 beds offsite and more than 1700 staff.
- Currently QEII is undergoing an expansion project to add another 112-bed specialised surgical facility by 2027 to assist with future growth and become the premier surgical hospital for Metro South Health.
- QEII provides a range of inpatient and outpatient services including general medicine, general surgical, cardiology, geriatric medicine, intensive care, acute stroke, palliative care, and has a state-of-the-art Emergency Department and Endoscopy Suite.
- Accredited Pathway to Excellence® hospital providing a positive practice environment where nurses can flourish.

Our Staff

QEII employs over 1700 staff including:

- 972 nurses
- 355 medical officers
- 133 allied health professionals



Our Activity

In the 2022 – 2023 financial year there were:

- Over 35 000 patients admitted to QEII
- Over 65 000 patients treated in the Emergency Department
- 6 700 patient procedures conducted in the Endoscopy Suite

Aim of the Graduate Program

- Assist the graduate nurse to transition from novice to competent practitioner.
- Provide structured learning experiences that will assist the graduate registered nurse to develop their required clinical knowledge and skills.
- Support the graduate in both education and clinical environments.
- Promote the development of confidence in clinical practice.
- Provide adequate organisational support and practice-based education to assist the graduates successful transition into the workplace and to remain satisfied in the profession long term.

Find out more

metrosouth.health.qld.gov.au

MS_NM_Graduate_Support@health.qld.gov.au

(07) 3182 6330

QEII Jubilee Hospital



Ward 4A: General Medical Unit Information

Ward 4A is a brand new 28-bed general medical ward that opened on the 27th November 2023. Ward 4A accommodates a variety of medical patients with extensive comorbidities, including care of acute general medicine patients and supports care of patients with cognitive impairment particularly dementia and delirium. Patients are admitted to the ward via ED, direct admission, and inter-ward transfer.

4A aims to provide a high standard of specialised, efficient, and safe, person-centred care to patients admitted to our service, utilising a coordinated multidisciplinary approach. This is achieved by utilising an evidence-based approach, supported by ongoing research and education.

Our Staff

Ward 4A has a large team of nursing staff including a Nurse Unit Manager, Clinical Nurses, Registered Nurses, Enrolled Nurse Advanced Skills, and Assistant in Nursing.

The medical education team provide support to 4A graduates throughout their graduate program. The medical education team consists of a Medical Nurse Educator and 6 Medical Clinical Facilitators that support across medical wards and out-patient departments.

Common 4A Presentations & Procedures

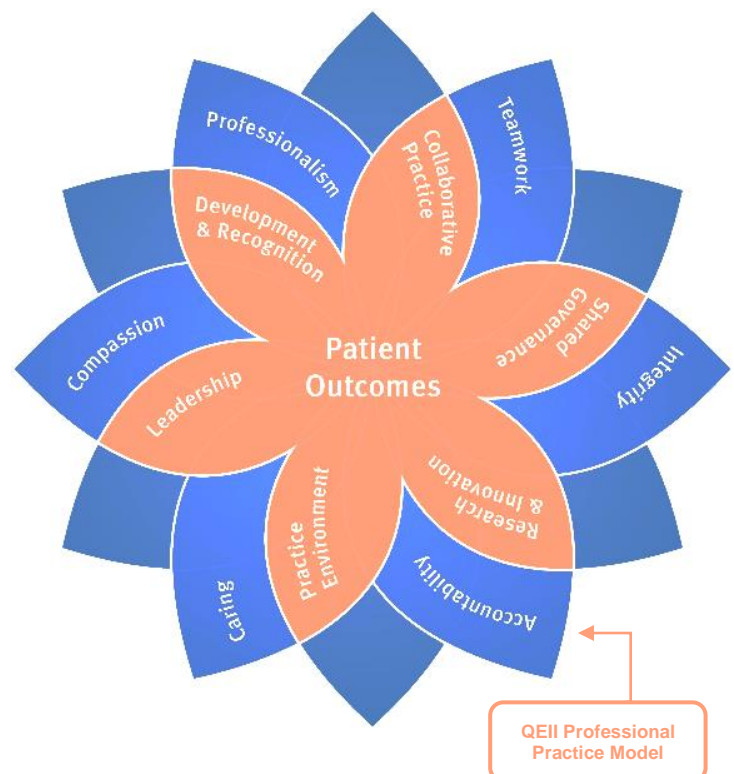
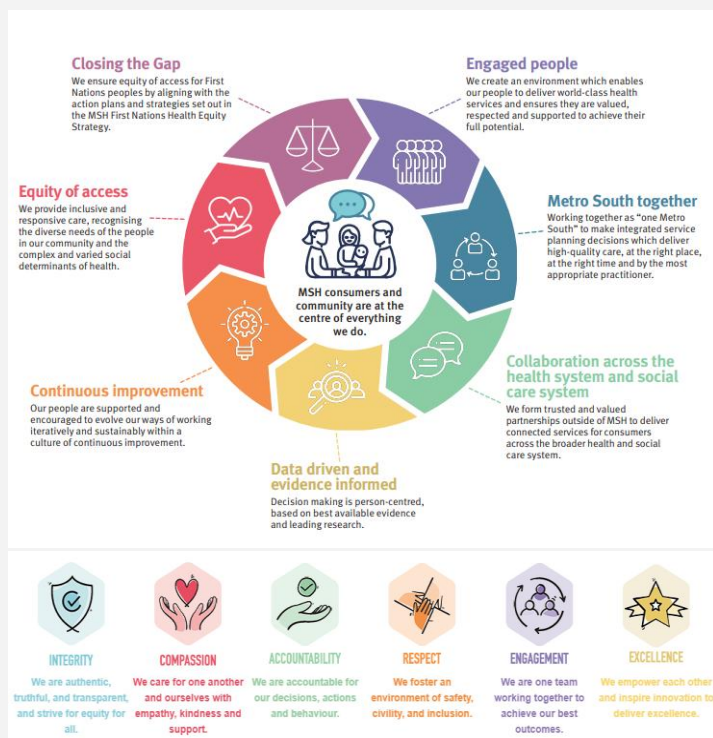
Acute and chronic medical conditions include:

- Recognition and management of the deteriorating patient
- Acute Coronary Syndrome (ACS), Myocardial Infarction (MI), NSTEMI, Angina, Heart blocks, CCF.
- Respiratory: COPD, asthma, PE, bronchiectasis, pneumonia, chest infections, Influenza A, Tuberculosis, ICC drains, pneumothorax.
- Kidney and urinary tract infections
- Diabetes management & DKA
- Infusions
- Infectious Disease: MRSA, NMMRSA, VRE
- Sepsis
- Management of dementia and delirium

Graduate opportunities

- Learn and consolidate specialist medical and cognitively impaired nursing skills
- Management of acutely unwell medical patients across multiple specialities
- Management and escalation of the deteriorating patient
- Local unit education and training
- Opportunity to undertake quality initiatives.

Metro South Hospital Initiatives



metrosouth.health.qld.gov.au/join-our-team/graduate-programs