

Paediatrics (CIU) Logan Hospital Graduate Nursing Program

Unit Overview

The Logan Hospital Children's Inpatient Unit (CIU) 24 inpatient beds and 4 day surgical beds. CIU cares for children with general medical and surgical conditions from birth to 16 years old. CIU aims to provide a high standard of holistic family centred and evidenced based care with multidisciplinary collaboration.

Benefits of undertaking a graduate program on CIU

Gain experience delivering family centred care to this vulnerable population within the support of a dedicated multidisciplinary team (paediatric nurses, medical officers, pharmacist, physiotherapist, occupational therapist, speech therapist and dietician) working together to deliver care at the highest possible standard.

As a general ward, CIU graduates gain a variety of transferrable skills and develop their knowledge through exposure to a range of different medical and surgical conditions that involve neonates up to adolescents.

Enrolment on the Statewide Paediatric Transition Support Program (TSP) to develop the core knowledge and skills to care for paediatric patients, with ongoing support from a Nurse Educator (NE), Clinical Facilitator (CF), Clinical Nurse Consultant (CNC) and Nurse Unit Manager (NUM).

Successful completion of all requirements will enable articulation to tertiary credit to many post-graduate programs which provides a valuable avenue into advancing education and career development.



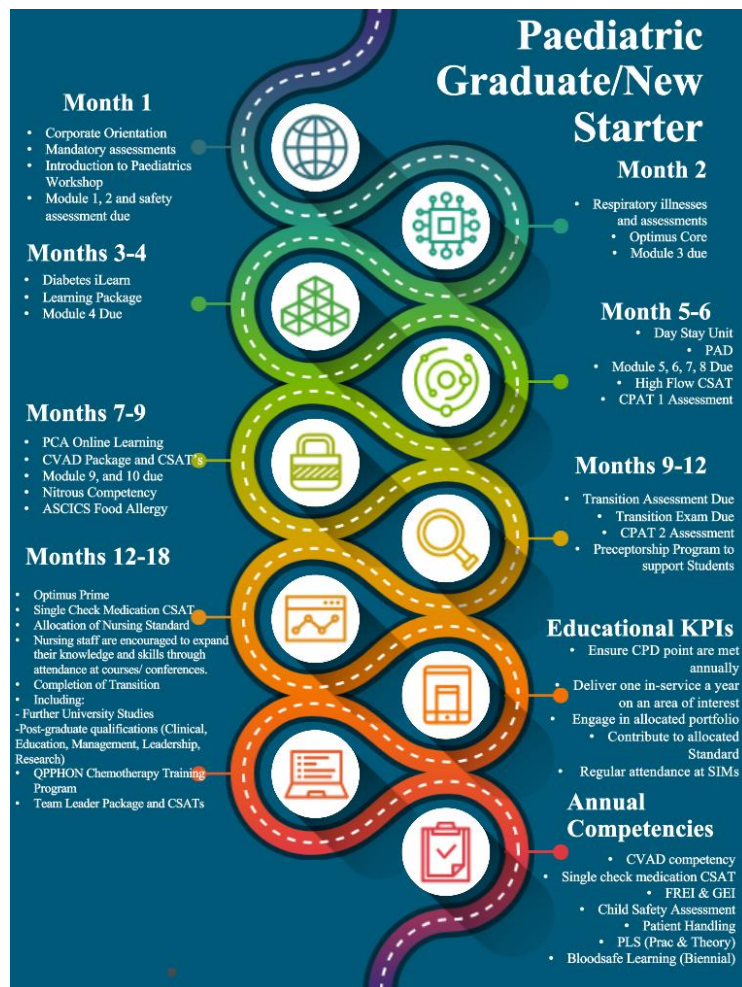
2025 Graduate Program Overview

The graduate nurse program at Logan Hospital's Childrens Inpatient Unit (CIU) is a 12-month rotational program and there are two options available.

- 6 months CIU/6 months Paeds Emergency
- 6 months CIU/6 months Special Care Nursery

Working with experienced paediatric nurses, our graduate program aims to develop self confidence in clinical practice through structured clinical learning and exposure.

New graduates will be provided with a structured program coordinated by the Nurse Educator.



Past CIU graduates are now working as

- Registered Nurses at tertiary paediatric hospitals
- Team leaders
- Retrieval Nurses
- Clinical Nurses
- Clinical Nurse Consultants
- Nurse Educators
- Nurse Unit Managers



Metro South Hospital Initiatives



Testimonials

"Working on the children's inpatient unit as a graduate nurse has been incredibly rewarding. Every day, I feel privileged to be part of a team that not only provides excellent medical care but also creates a warm and supportive environment for our young patients and their families. The learning opportunities are abundant, and I've grown immensely both professionally and personally. It's inspiring to see the resilience of the children we care for, and I'm proud to contribute to their well-being."

"Joining the children's inpatient unit as a new graduate nurse has exceeded all my expectations. The unit's commitment to family-centred care is truly remarkable. I've been given opportunities to participate in interdisciplinary rounds, contribute to care plans, and engage with families to ensure the best outcomes for our patients. The atmosphere is not only professional but also incredibly supportive. I feel fortunate to work alongside such dedicated colleagues who are passionate about paediatric nursing and always strive to create a positive impact on the lives of our young patients."

"Transitioning from student to nurse on the children's inpatient unit has been a seamless and fulfilling journey. The team here is exceptionally supportive, always willing to guide and mentor. I've developed strong clinical skills and gained confidence in managing complex cases under their guidance. What stands out the most is the genuine care and compassion everyone shows towards our patients. Whether it's comforting a scared child or celebrating a recovery, every moment reinforces my passion for paediatric nursing."