

Ward 6C MAPU Logan Hospital Graduate Nursing/ Midwifery Program

Unit Overview

Ward 6C Medical Assessment & Planning Unit is currently a 26-bed inpatient unit within the Internal Medical Service.

MAPU provides a responsive and expedited patient journey pathway for acute medical inpatient care by having a multidisciplinary team provide specialised assessments to support treatment and goals of care. MAPU has an experienced nursing team with depth of leadership and clinical expertise of a Grade 7 NUM and CNC to lead, coordinate and support care. The Clinical Nurse team provide unit leadership in team leading on each shift with at nursing team model of care. The unit is supported with MAPU CF and the NMDPU Nurse Education team.

Benefits of undertaking a graduate program in *Ward 6C MAPU*

Our nursing transition to practice supports the lifelong learning pathway with opportunities in developing nursing technical expertise.

- Telemetry Cardiac Monitoring
- Complex IV infusions – critical electrolyte disturbances
- Care of complex patient – comorbidities and referral pathways for discharge
- IV Cannulation and venepuncture
- Diabetes management
- Complex wound care & management
- Acute assessment and care planning for short stay patients including cardiovascular, respiratory and neurological assessments.
- Preceptor program at completion of 12-months

2025 Graduate Program Overview

- Orientation – Corporate 4 days + 1-day MAYBO occupational violence training
- MAPU Unit Orientation 2 weeks – generally 6-8 days
- Graduate Study Days – 4 per year along with QI project
- Shifts – Continuous shift worker roster at 0.63FTE = 6 shifts per fortnight
- Rotation at 6-months with Ward 5A Cardiology, Renal and General Medicine
- MAPU CF support, NMDPU CF Support

MAPU Staff Testimonials

RN Liv *“a great team to work with along with diversity in clinical challenges. I have worked from a graduate to senior nurse and loved it”.*

NUM Kate *“We love having graduates as part of our nursing team and have always tried to take additional graduates to give as many opportunities as we can.”*

CN Victoria *“MAPU provides complex variety of patient and families. No day is ever the same.”*

CN Kerrie *“Graduates get to develop robust clinical decision and problem-solving skills – they really become great nurses at MAPU”*

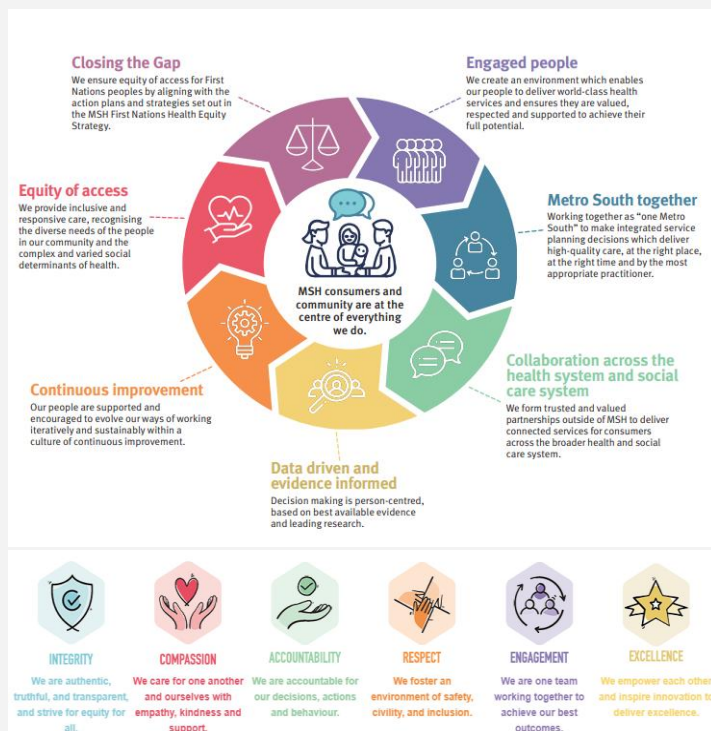


Past *Ward 6C MAPU* graduates are now working as

6 Registered Nurse Graduates – 2024 Program

- Violetta
- Loique
- Samantha
- Vik
- Daisy
- Alix

Metro South Hospital Initiatives



Testimonials

Daisy 2024 *"Love the fast pace, see a lot of different patients so get to learn lots. The MAPU nursing team are so supportive. Very good teamwork and environment."*

Shannon 2022 *"I've grown up in MAPU. Wide variety of patients. Nursing leadership on MAPU is supportive and great patient advocates. It's been no judgement in that I feel free to ask any questions"*

Joe 2021/22 *"I would choose MAPU all over again and still here. The team is great – senior nurses look out for the younger ones"*

Vik 2022 *"I like MAPU – team work, helpful support. Isa has been a great support when I was a student and this year as a graduate"*